

Welcome to HandicapMaster Supplement 5

Installing Gemplus GCR700 Terminal

This file provides advice to Users when installing a
Gemplus GCR700 Terminal for use with HandicapMaster

Author: Nick Perkins
Last Updated: 18 February, 2003

© Nick Perkins 2003

Contents

CONTENTS	2
INTRODUCTION	3
PURPOSE OF THIS DOCUMENT	3
WHAT YOU WILL NEED.....	3
INSTALLING THE TERMINAL	3
CONFIGURING THE TERMINAL TO WINDOWS	4
STEP 1 - CREATING AN INSTALLATION DISKETTE	4
STEP 2 – INSTALLATION (WINDOWS 98 OR WINDOWS ME).....	5
STEP 3 – INSTALLATION (WINDOWS XP)	9
APPLYING THE HM_GEMCORE UPDATE	12

Introduction

Purpose of this document

This document describes the actions required to install a Gemplus GCR700 Terminal for use with HandicapMaster.

This terminal allows players to input their own competition scores, using their Golfing Union of Ireland GOLFnet Smart Cards.

What you will need

The installation requires the following:

- *) A Gemplus GCR700 Terminal,
- *) A standard Mains Power socket,
- *) A Serial Port on the PC running HandicapMaster,
- *) Two additional files downloaded from the HandicapMaster web site,
- *) A spare 3.5 inch Floppy Diskette, and
- *) The installed version of HandicapMaster to be 4.4 or later.

Installing the Terminal

The terminal requires connection to

- *) the Mains Power socket, and
- *) the Computer (a Serial Port)

Once the terminal has been connected and powered on, a green LED will light up. This is situated at the front of the Unit below the keypad.

A yellow LED (to the left of the green Power LED) will light when a Smart Card is inserted in the top slot, and HandicapMaster reads the card.

Configuring the Terminal to Windows

Step 1 - Creating an Installation Diskette

The first step to configuring the terminal to Windows is to create an Installation Diskette. This is a floppy diskette that can be used by Windows to configure the terminal.

*) Download ZIP file 'Gemcore_Installation.Zip' from the HandicapMaster web site.

*) Using an empty floppy diskette, UnZip this file to the diskette.

There should be five files placed on the diskette. These are:

Gemcore.inf
W32gchan.dll
W32gr09.dll
W32gtser.dll
W32gtser.exe

This diskette will be used in steps 2 and 3 (Installation).

Step 2 – Installation (Windows 98 or Windows ME)

These steps are suitable for PC's running Windows 98 and ME. If you have a PC running Windows XP, please follow Step 3 instead.

Select
CONTROL PANEL
from the **START** menu

Select **ADD NEW HARDWARE**



The 'Add New Hardware' wizard
will be displayed

Click **NEXT**.



Click **NEXT**.



Select

NO, THE DEVICE ISN'T IN THE LIST

and click

NEXT.



Select

NO, I WANT TO SELECT THE HARDWARE FROM A LIST

and click

NEXT.



Select

OTHER DEVICES

and click

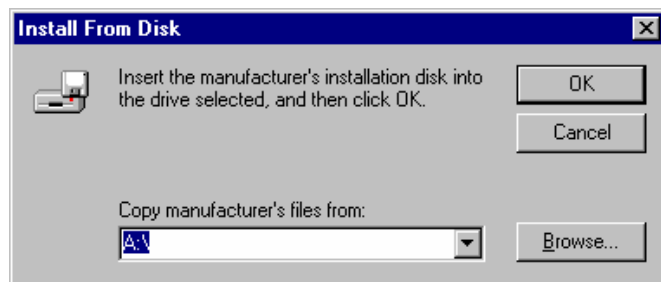
NEXT.



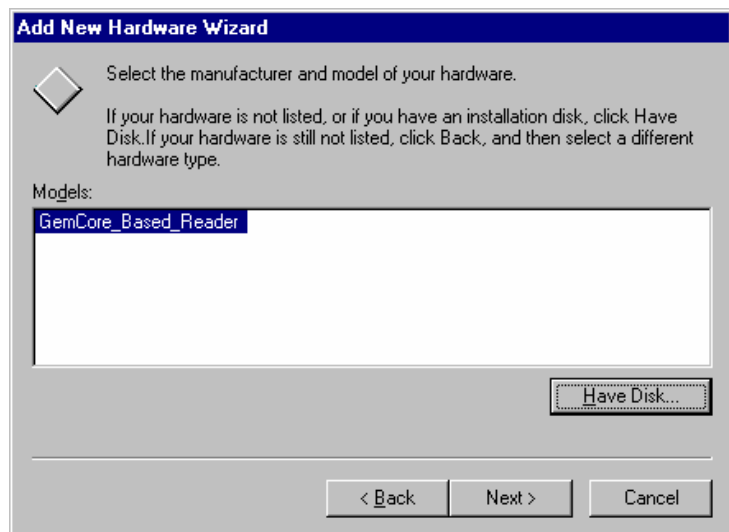
Click **HAVE DISK...**



Insert the Installation Diskette into the floppy drive and click **OK**.



The 'Model'
GEMCORE_BASED_READER
should be displayed.
Click **NEXT**.



Click **FINISH**.



The Reader should now be added to Windows.

To confirm installation, select

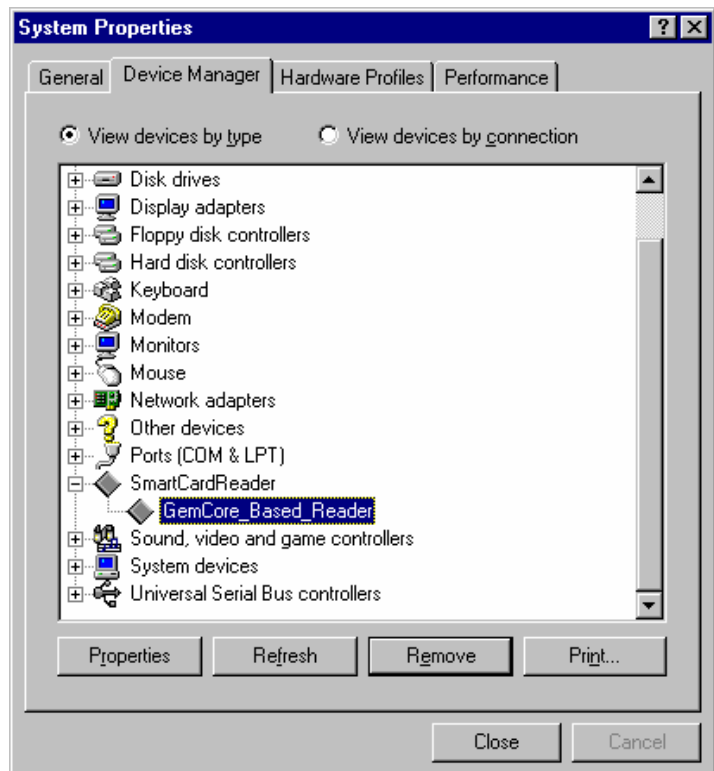
SYSTEM

from within Control Panel and click the

DEVICE MANAGER

tab.

An entry SMARTCARDREADER should be visible with GEMCORE_BASED_READER shown under this heading.



Step 3 – Installation (Windows XP)

These steps are suitable for PC's running Windows XP. If you have a PC running Windows 98 or ME, please follow Step 2 instead.

Download ZIP file 'CNFGCR.zip' from the HandicapMaster web site.

UnZip this file to an empty folder on the PC. There should be three files in the folder. These are:

Inscnf32.exe
Icomp.exe
Cnfgcr.z

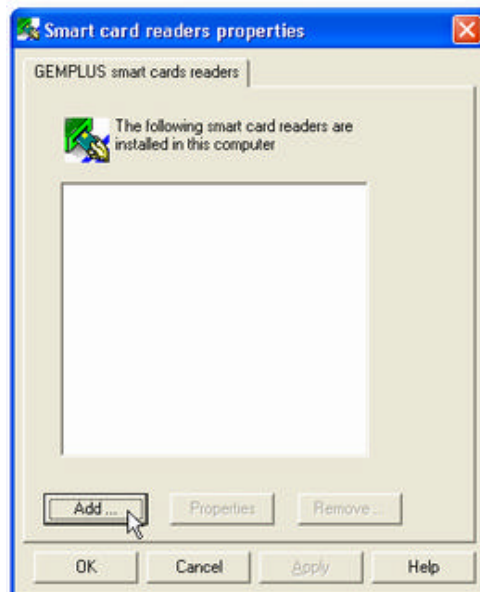
Start Windows Explorer and locate these files. Execute file **Inscnf32.exe** by double-clicking over it. Nothing will apparently happen. However, after a few seconds, a new item will be installed into the Control Panel on your PC. This will be called "Smart Card Reader".

Select
CONTROL PANEL
from the **START** menu

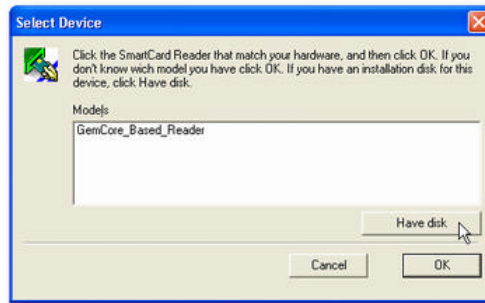
Select **SMART CARD READER**



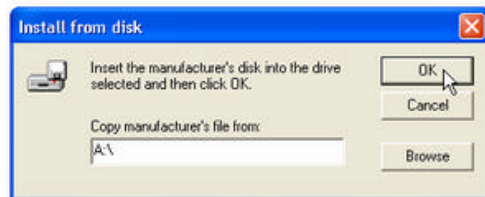
Click **ADD**



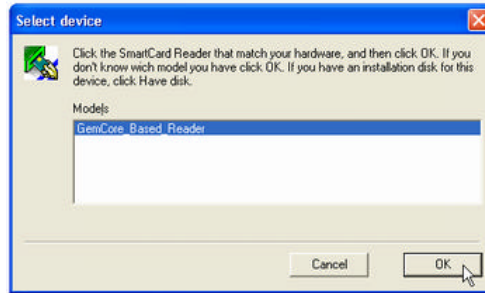
Insert Installation Diskette in the floppy drive and Click **HAVE DISK**



Click **OK**

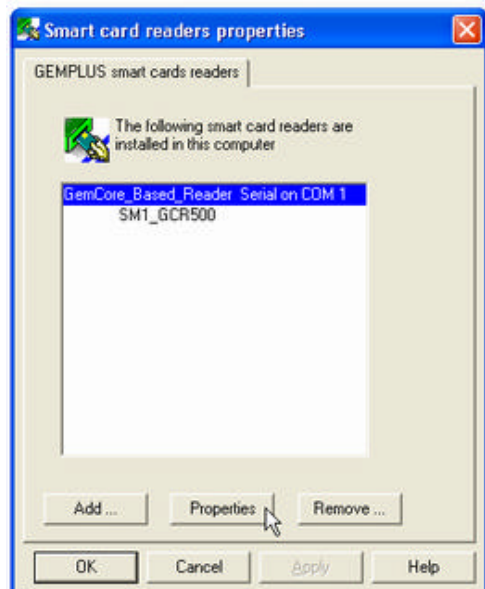


Select
"Gemcore_based_reader" and
click **OK**

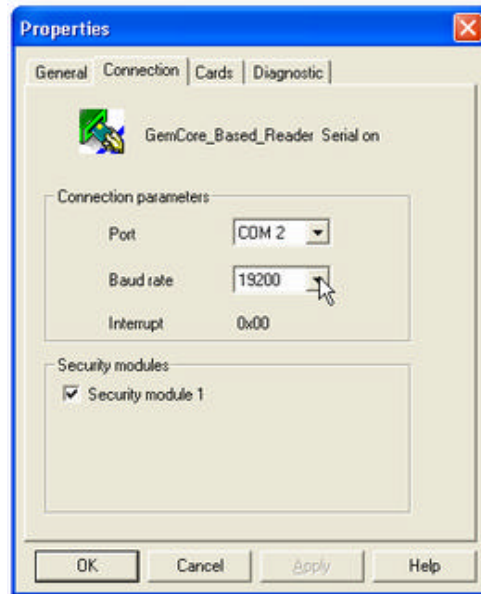


Click **Cancel**

Select
"Gemcore_based_reader
Serial on COM1" and click
PROPERTIES



Select **CONNECTION** Tab and choose the correct Com port for your PC. Set the baud rate to **19200**.



Connect up and turn on the Gemplus Terminal. The Green power light should be displayed.

Click **DIAGNOSTIC** tab and click **TEST READER**.

If the Terminal is installed and is functioning correctly, the display will show:

GemCore-R1.10
IFD: 19200
ICC: REMOVED
SAM1: POWER OFF

Applying the Hm_Gemcore Update

The final step required to install the terminal is to update HandicapMaster with its necessary files. These files contain the program libraries for accessing the Terminal.

*) Download 'Hm_Gemcore.exe' HandicapMaster update file from the HandicapMaster web site.

*) Run this update. This will add the necessary files to the computer.